

**Uplogix provides the industry's first local management solution, putting the power of your most trusted IT administrator everywhere, all the time.**



## CONTACT US

[sales@uplogix.com](mailto:sales@uplogix.com)

[www.uplogix.com](http://www.uplogix.com)

877.857.7077

# Managing Local Management Across the Enterprise

Control Center from Uplogix enables local management by providing a centralized point of control for all Uplogix Local Managers (LMs) and managed devices deployed throughout your distributed IT environment. With its web-based graphical user interface, Control Center puts IT administrators in control of real-time data to easily manage, configure, and control all network devices and servers connected to Uplogix LMs.

## Control Center Key Benefits

### ACCESS

- ▶ **Single Interface** | Simple point-and-click interface for executing enterprise-wide management tasks, such as distributing patches, resetting passwords or performing configuration changes
- ▶ **Persistent Connectivity** | Central proxy for seamless in-band or out-of-band communication with Uplogix LMs
- ▶ **Flexible Reporting** | Robust and customizable reporting of event, alarm, and device statistics, as well as network service level measurements across the enterprise

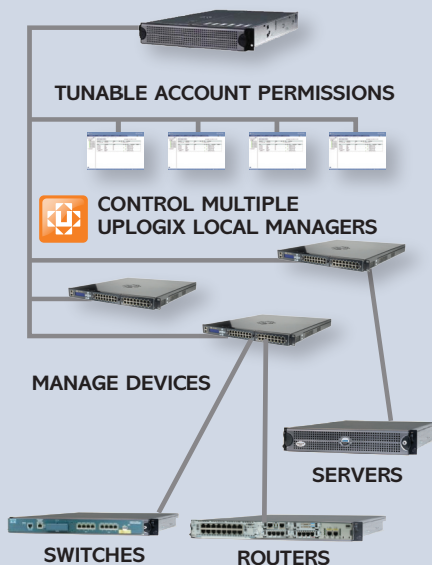
### CONTROL

- ▶ **Centralized Management** | Consistent, enterprise-wide point of control for scheduling all maintenance, management, configuration, and recovery tasks performed by Uplogix LMs
- ▶ **Extensible Automation** | Simple interface for users to define custom actions for Uplogix Configuration Management & Recovery - Archives and stores configuration files for all managed devices and can quickly restore good working configuration file to a managed device via the Uplogix LM
- ▶ **Seamless Integration** | Flexible integration with other management systems and solutions; alarms and events appear as if they came from the managed device itself

### ENFORCEMENT

- ▶ **Policy Enforcement** | Maintains a single security policy by deploying and enforcing AAA settings to all Uplogix LMs; Enforces user access controls through role-based permissions
- ▶ **Compliance Reporting** | Archives all session logs from Uplogix LMs and Control Center for auditing and compliance purposes

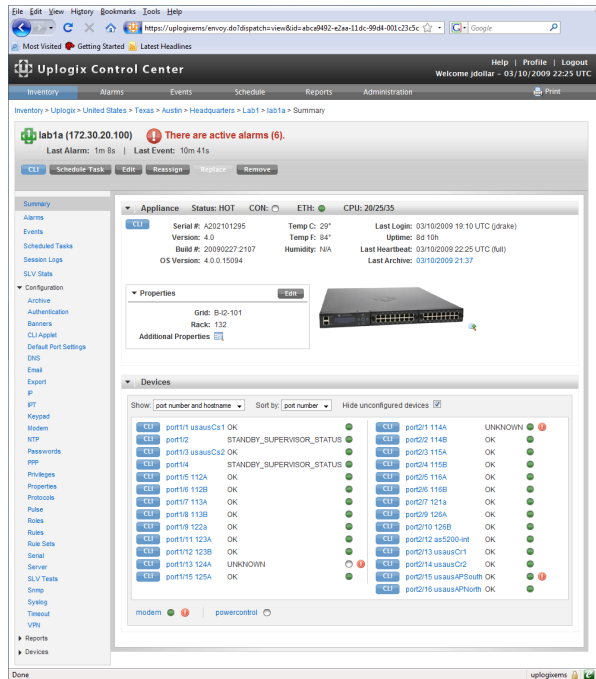
**UPLOGIX CONTROL CENTER**  
 • Simple to Use Web Interface  
 • Enterprise-wide Management



Deployed in the NOC, the Uplogix Control Center delivers real-time monitoring and management capabilities, offering a unified view of what's occurring in a distributed infrastructure. As an element manager for Uplogix Local Managers (LMs), the Control Center also serves as the gateway between the LMs in the network and existing IT management systems. Control Center is deployed on a pre-configured, dual CPU, rack-mountable server, and includes an embedded Oracle database engine.



Uplogix Control Center dashboard view of all Local Managers and devices under management



## Key Features & Capabilities

The Uplogix Control Center enables automated remote management by providing a centralized point of control for all Uplogix LMs and managed devices deployed throughout your distributed IT environment.

Feature	Capability
<b>Access</b>	
Secure Access	Provides access via SSL browsers with remote authentication to TACACS or RADIUS. Enables access to Uplogix LMs and connected managed devices without the need for remembering location or network address of each device.
Hierarchical Views	Organizes the Uplogix deployment into an inventory hierarchy based on business unit, geographical location, or other customer-defined parameters
Reporting	Generates detailed reports using built-in templates or using customized templates based on organizational requirements; provides on-demand reports and/or sends auto-generated, scheduled reports via email
Statistical Data	Facilitates access to detailed data from each Uplogix LM—such as device monitors, alarms, events, service level verification tests, and environmental readings; this data is available for long-term trending, baselining, forensics, and reporting
<b>Control</b>	
Uplogix Local Managers	Archives and stores Uplogix Local Management Software updates. Centrally manages the configuration of all Uplogix LMs; new Uplogix LM deployments organized into groups automatically assume hierarchically inherited settings
Device Management	Archives and stores POST records and debug data (e.g. – Cisco “show tech”) images and configuration files for managed devices
Automation	Enables creation of rules to monitor device state and defines actions for Uplogix LMs to perform routine administrative tasks such as maintenance, configuration and recovery
Alarms and Events	Collects device alarms and events from Uplogix LMs and displays for administrators. Sends alert messages to users based on customer-defined roles and policies
Integration	Sends alarms and events to other management systems as if they came from the managed device itself causing minimal disruption to the existing infrastructure. Sends alert messages to users based on subscription to specific devices, interfaces, or Uplogix LMs
<b>Enforce</b>	
Authentication	Manages usernames, passwords, and account details for all Uplogix LMs. Deploys AAA settings to all LMs to maintain a single security policy
Authorization	Manages granular access control at individual LM or group levels
Security Policies	Logs and archives Control Center user sessions for review. Archives Uplogix LM session logs for auditing purposes

## TECHNICAL SPECIFICATIONS

### System

- ▶ Dual Quad-Core 2.3GHz Xeon processors
- ▶ 8GB RAM
- ▶ 6 x 146GB hard drives (total storage for application & data)
- ▶ Red Hat Enterprise Linux
- ▶ Self-contained (zero-administration) embedded Oracle® Enterprise Edition (10G) database
- ▶ Automatic, hot-backup of management data
- ▶ SNMP interface for integration with common network management systems

### Dimensions/Weight

- ▶ 2U rack-mountable chassis
- ▶ 29.3" (74.4 cm) D x 17.5" (44.4 cm) W x 3.4" (8.6 cm) H (with bezel attached)
- ▶ 55.2 lbs (25.1 kg)

### Operating Environment

- ▶ Operating Temperature: 10° C to 35° C (50° F to 95° F)
- ▶ Operating Relative Humidity: 20% to 80% non-condensing

### Power

- ▶ AC configuration with standard redundant 750W hot-plug auto-switching universal 110/220V AC power supplies

### Regulatory

- ▶ FCC (U.S. only) Class B
- ▶ ICES (Canada) Class B



**ABOUT UPLOGIX //** Uplogix provides the industry's first local management solution. Our co-located management platform automates routine administration, maintenance and recovery tasks—securely and regardless of network availability. In comparison, traditional network and systems management depends on the network, uses multiple tools, and remains labor intensive. Uplogix puts the power of your most trusted IT administrator everywhere, all the time.

Uplogix is privately held and headquartered in Austin, Texas with international offices in London and Monterey. For more information, please visit [www.uplogix.com](http://www.uplogix.com).

www.uplogix.com | Headquarters: 7600B N. Capital of Texas Hwy. Suite 220, Austin, Texas 78731 | US Sales 877.857.7077, International Sales +44(0)207 193 2769 © 2011 Uplogix, Inc. All rights reserved. Uplogix, the Uplogix logo, and SurgicalRollback are trademarks of Uplogix, Inc. All other marks referenced are those of their respective owners. 070611